



TraxFast™ HS



An advanced data collection application for **HOMELAND SECURITY**

A system must be flexible enough to satisfy or exceed your demands in accounting for evidence items/assets. **TraxFast HS** can identify and track these items whether inside or outside the facility. In fact, the item can be anywhere in this world and still be tracked by **TraxFast HS**. An asset can be anything you want to identify because of its value, security, regulation, importance or for any other reason that justifies the accountability and identification of an item and its characteristics.

BENEFITS OF THE **TraxFast HS** - **HOMELAND SECURITY**

- ELIMINATES HUMAN ERROR AND MANUAL RECORDING OF EVIDENCE/ASSETS
- MAINTAINS AN AUDIT TRAIL FOR EACH INDIVIDUAL ITEM
- DETERS MISPLACEMENT AND DISCOURAGES UNAUTHORIZED USE AND MOVEMENT OF PRODUCT
- PHYSICAL INVENTORIES ARE EITHER ELIMINATED OR SIGNIFICANTLY SIMPLIFIED
- FACILITATES TRACKING OF ALL ITEMS ASSOCIATED WITH A CASE OR INCIDENT
- ALLOWS FACILITIES TO MATCH EXISTING INVENTORIES WITH FUTURE PLANS AND SPECIFICATIONS TO DETERMINE SURPLUS AND SHORTAGES WHEN CONTEMPLATING USE OF EXISTING PRODUCTS

Information is power and time is of essence to meet your objectives You need to know exactly what you have and accurately track it for disbursement to those areas that need it. Lost or misplaced items can mean the difference between success and failure pertaining to litigation. Until now, it has been extremely difficult to track those items vital to your mission.

TraxFast HS is divided into three processes; 1.) identify the scope and parameters of item tracking such as buildings, locations, and types of items/assets; 2.) tag and barcode scan the items; and 3.) generate the reports required to analyze and record items movement. The **TraxFast HS** Asset Management System operates using field data collection devices called PDA (*Personal Digital Assistant*) handheld computers. The PDA utilizes the Pocket PC operating system and can include an integrated image scanner for the purpose of reading and interpreting standard barcodes or two dimensional InfoDot™ barcodes that are UID compliant. Also, an optional GPS or RFID Receiver Module can be added to the PDA for capturing geographical coordinates of an asset. For those valuable or *hard to describe* assets, an Integrated Camera can be added to the PDA for color picture taking and storage with the asset's data. Scan paper documents to record any information trail about the items/assets; even maintenance manuals. Reports and inquiries are included in the **TraxFast HS** Management application residing on a PC using the Windows operating system. Once **TraxFast HS** is installed on your computer or network, you can start creating barcode Worksheets and Labels for use in identifying locations and items/assets. Next , physically tag those items using compliant InfoDot™ labels that will withstand the most demanding environment. All equipment meets stringent military standards (MIL-STD-810F).



The first time you identify a piece of evidence, all information about that item is retained by **TraxFast**. From that moment any movement of that item, whether inside the building or outside, **TraxFast** records the movement so reporting is accurate at the time of inquiry. Taking later inventories of your tagged items is a snap. All you have to do is scan a barcode label and the asset is verified because **TraxFast** already knows the identity of the asset.

Whether remote or local, your data can be transmitted and updated into your **TraxFast HS** network for immediate reporting and accounting. Any data corrections or additions can easily be entered into the **TraxFast HS** PC system. is stored in an ODBC compliant database with reports generated using easy retrieval and integration to other financial systems that need the information.



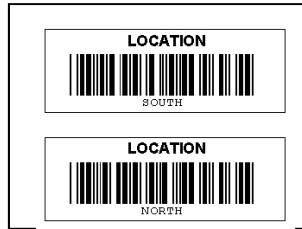
All information
Microsoft Access for

TraxFast HS ASSET TRACKING PROCEDURE

STEP 1: Identify Yourself
Scan your badge once and it will redisplay until unit is turned off.



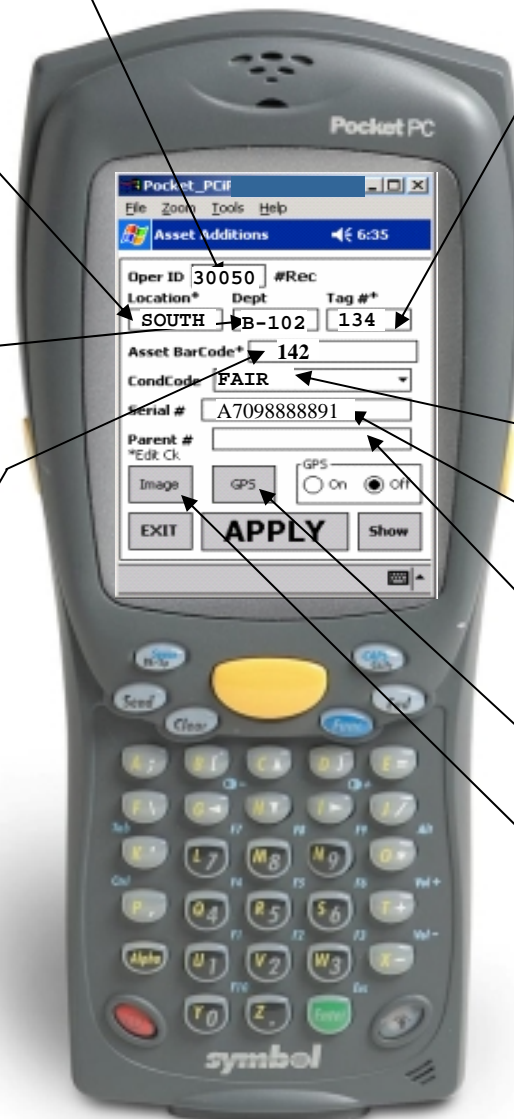
STEP 2: Identify Main Location
Scan your affixed barcode location label; it will redisplay until a new location is scanned.



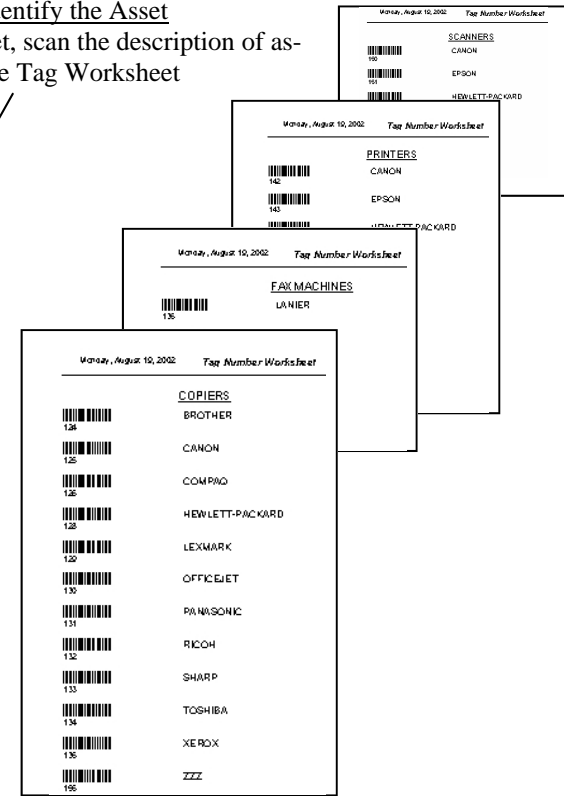
STEP 3: Identify the Detail Location
Scan or key-enter the location that further identifies where the asset is located. Will redisplay until another entry is performed.



STEP 4: Label the Asset
Remove a preprinted Info-Dot™ UID Compliant label, scan and apply to asset.



STEP 5: Identify the Asset
If new asset, scan the description of asset from the Tag Worksheet



STEP 6: Identify Condition of Asset
Select the condition from a list box.

STEP 7: Identify the Serial Number
Scan or key-enter from the serial number label found on item/asset.

STEP 8: Identify Kit
Scan or key-enter the parent tag if item/asset is part of a kit.

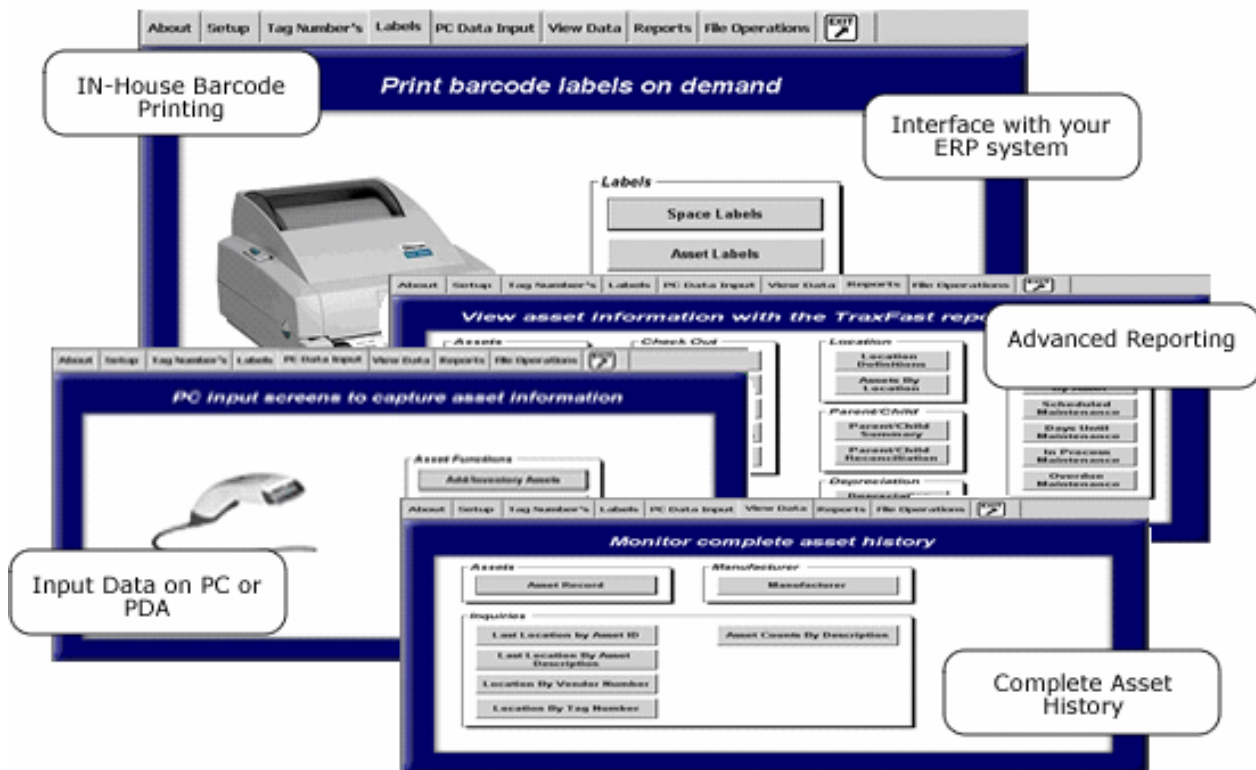
STEP 9: Identify GPS Coordinates
Select this option should you want the asset identified by geographical coordinates.

STEP 10: Take a Picture
Attach a picture to the asset record by selecting the Image option.



TraxFastTM HS

Homeland Security Edition



A Homeland Security Application must address some very specific issues associated with building a “Certifiable Database” that could be admissible in a court of law. To provide a unique number that is associated with piece of evidence that can be utilized and referred to by any Government Agency has significant benefits. The InfoDot serves as a data pointer and allows virtual information such as lab reports, related items, photos, voice notes, maps to be linked and tracked.

TraxFast HS provides a quick method of collecting and storing information about Evidence and related items associated with a Case Number. It answers:

1. *What Items need to be tracked and accounted for?* – **TraxFast HS** will identify those items to the level of detail you need. **TraxFast HS** will not only identify the manufacturer and model number of the mission critical Kit items, but will get down to the level of serial number and condition of the item, if needed. If that is not enough, a picture and voice recording can be taken, and attached to that item record for visual and audio verification.
2. *Where are my items?* – **TraxFast HS** directs you to that asset at the level you want. Building, floor, department, room, person or any other combination can easily allow you to find and verify that item or piece of evidence. If that is not enough because your items are located outside of a buildings, you can activate the GPS recording and get the geographical coordinates that will identify the exact location of the item at that moment. **TraxFast HS** will allow you to track the movement of that asset as time passes whether the asset has permanently moved or borrowed with intent of return.
3. *What are my allocated assets worth?* – **TraxFast HS** will retain record of value of assets that can be used independently or exported to your accounting system for its reporting purposes.
4. *What assets or equipment require maintenance or upkeep?* – **TraxFast HS** will monitor the condition of an asset. If maintenance is needed, a schedule can be attached to the asset and used for directing the necessary activities. Reporting back of material and labor cost will be retained for further analysis.

Begin with the **TraxFast HS** Startup Kit and expand as you get comfortable with the procedures and operation. **TraxFast HS** is built modular where equipment and functionality can be added at anytime. This allows you to minimize initial costs and then expand without losing previous investment. Or, if you are not a first time user in working with item accountability, add the options to the base kit that will give you immediate payback in managing your assets now. Either way, **TraxFast HS** means "flexibility" to your Evidence/Item tracking program.



Get your Starter Kit for as little as \$ 4,995.00 !

Your kit will contain:

- TraxFast HS Asset Tracking Software CD
- PDA Handheld Computer with Battery
- Barcode/InfoDot Labels for Assets and Locations
- Step by Step Installation and User Guides
- 30 Days of Help Support (5 hour max.)

Should you want to get started with our Professional Series and take advantage of other **TraxFast HS** offerings, request a quotation for any of the following options that will configure your **TraxFast HS** solution to your immediate and future needs.

- Industrialized PDA Handheld Computer – Add the protection to your PDA that will protect it from accidental fall and the elements of the weather.
- PDA Barcode Laser Scanner – Identify your assets faster by scanning barcodes instead of using the PDA keyboard for data entry.
- PDA RFID Receiver – Capture asset information from a transponder "smart label" where barcodes cannot easily be scanned.
- PDA GPS Receiver – Capture the geographical coordinates of the asset.
- PC and PDA Mapping – View a map that shows exactly where outside assets reside with relationship to your position.
- PDA/Standalone Digital Camera – Choose color or black and white pictures for your asset portfolio.
- Barcode Printer – Print barcode worksheets and your own customized barcode labels for asset and location identification whenever you need them.

Extended Support – Should your **TraxFast HS** implementation involve multiple sites or your schedule dictates a phased-in approach add the comfort of knowing **TraxFast HS** support is a telephone call away. One year and longer support programs are available.

Distributed By: Aptec International (303) 674.6222
web: <http://www.infodotllc.com>

Contact: Michael Meeks
email: mmeeksaptec@msn.com

7537 Mentor Avenue, Suite 209, Cleveland, Ohio 44060-5400
7400 W.14th Avenue, Suite 11, Denver, CO 80214-4234
e-mail: sales@eteklogics.com Fax: (440) 975-0876

Tel: (800) 452-5251
Tel: (303) 237-5370
web: www.eteklogics.com

